

**Modelos:** EVO LED 20" CA201MA com Windows 7.

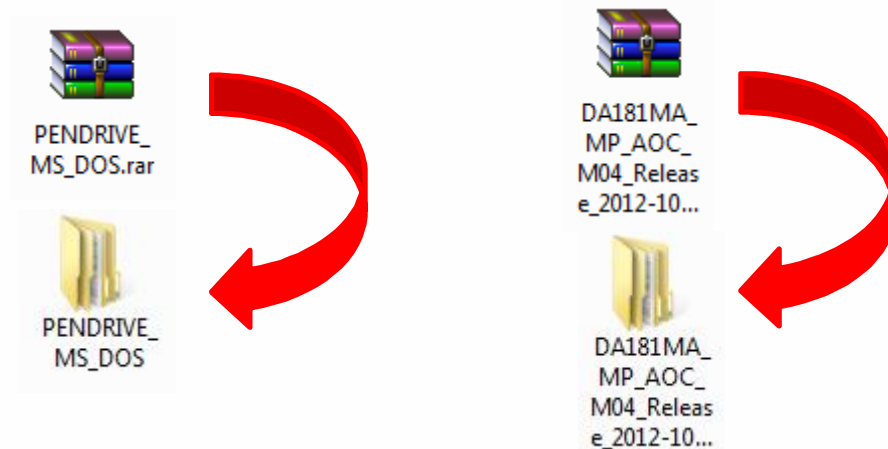
**Sintoma:** Travamento ( ao iniciar ou dentro do sistema operacional ), AIO não inicializa com dispositivo com Boot conectado a porta USB, travamento mouse e teclado.

Procedimento para atualização da Bios modelo CA201MA com Windows 7 de fábrica:

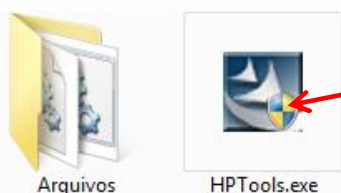
Acesse o site: [www.aocsuporte.com.br/redeautorizada](http://www.aocsuporte.com.br/redeautorizada) na aba computadores (selecione o modelo desejado), baixe os arquivos: **PENDRIVE\_MS\_DOS.rar** e **DA181MA\_MP\_AOC\_M04\_Release\_2012-10-08.zip**.

Crie uma pasta na área de trabalho com o nome **Atualização Bios** e salve os arquivos dentro dela.

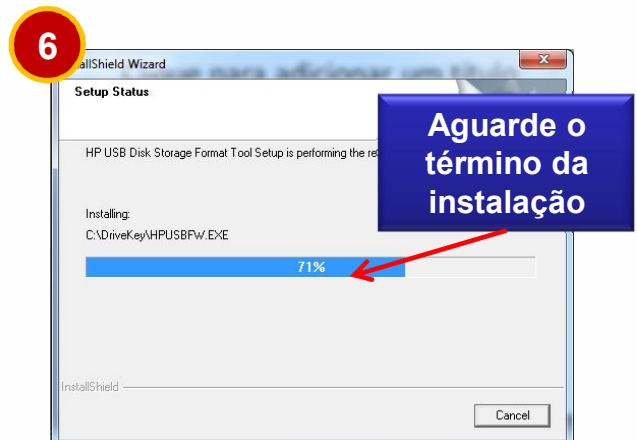
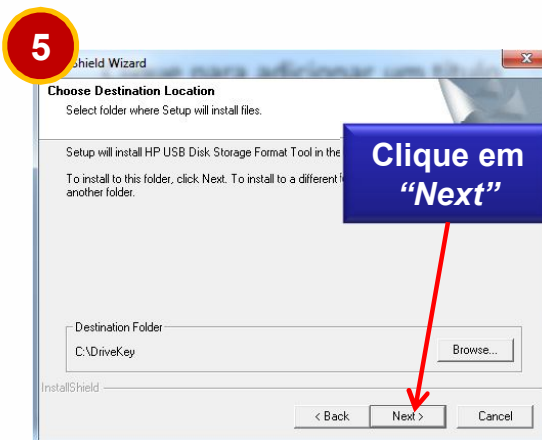
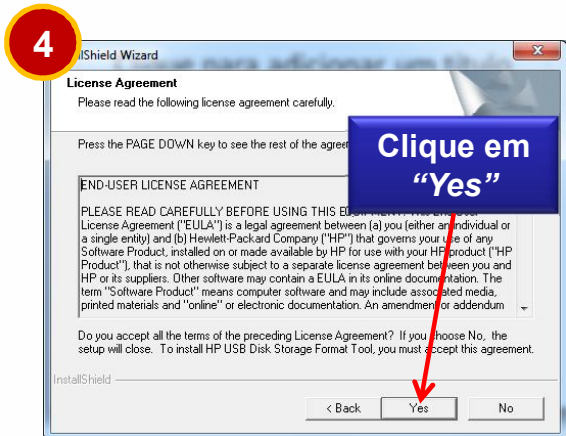
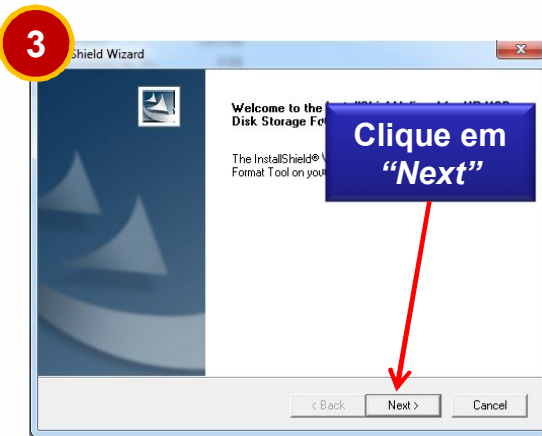
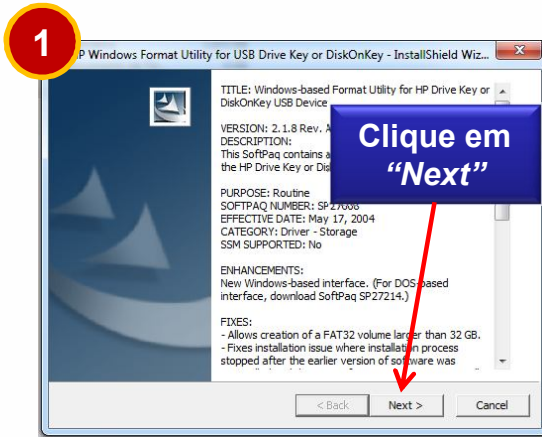
Extrair os arquivos:

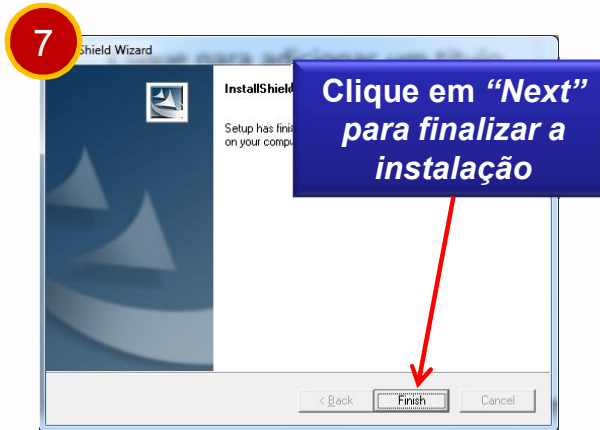


Abra a pasta: **PENDRIVE\_MS\_DOS**.

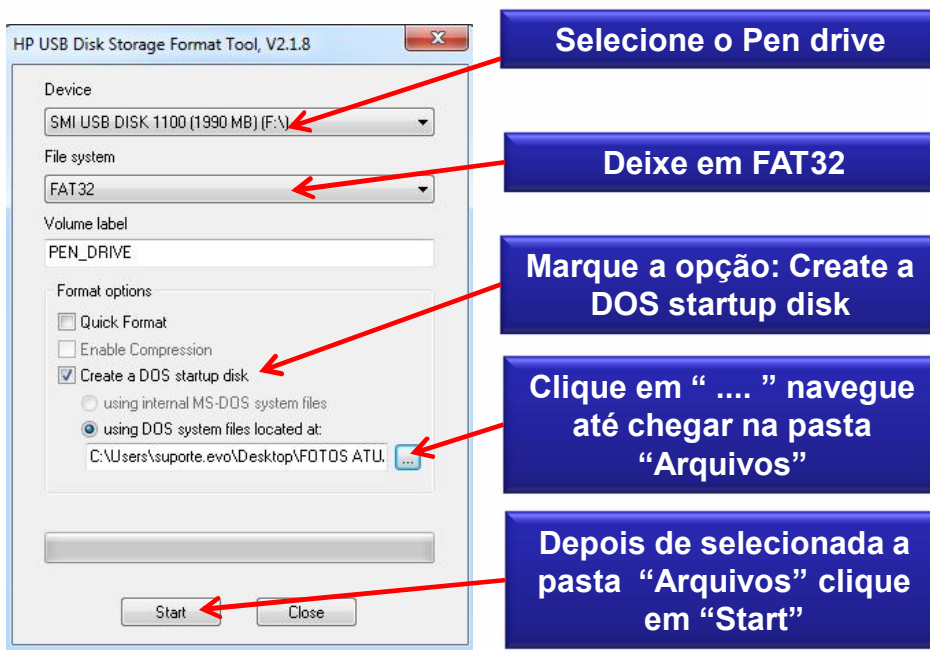


**Execute o arquivo:**  
**HP Tools.exe**

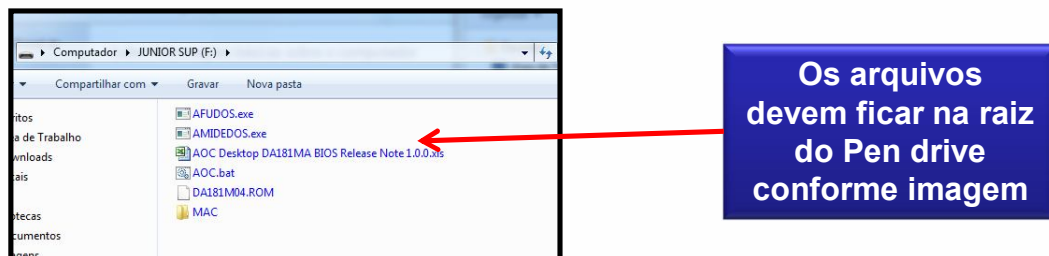




Insira o Pen drive no computador, formate para FAT32 e execute o programa que acabou de ser instalado: **“HP USB DISK STORAGE FORM...”**



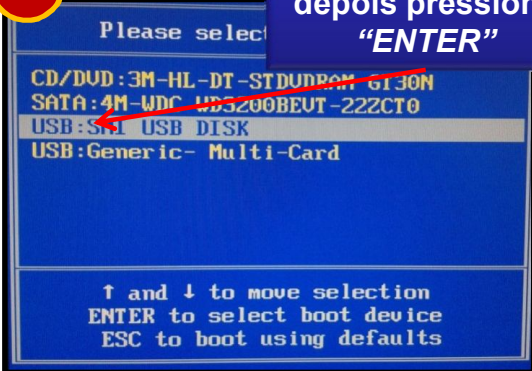
Após o término copie os arquivos da pasta **DA181MA\_MP\_AOC\_M04\_Release\_2012-10-08** para raiz do Pen drive.



Conecte o Pendrive no AIO que deseja atualizar a Bios, inicie-o pressionando F12.

**1**

Mova o cursor depois pressione "ENTER"

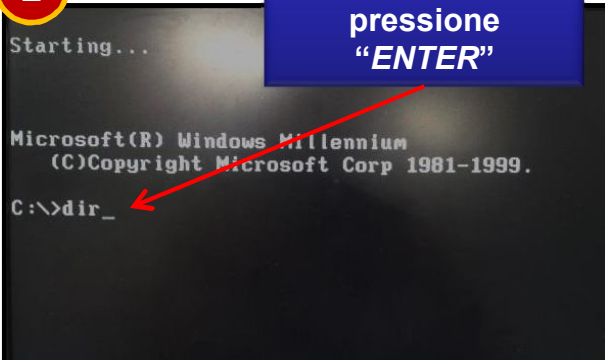


```
Please select
CD/DVD:3M-HL-DT-STDDRAM 6130M
SATA:4M-WDC WD3200BEUT-22ZCT0
USB:SD1 USB DISK
USB:Generic- Multi-Card

↑ and ↓ to move selection
ENTER to select boot device
ESC to boot using defaults
```

**2**

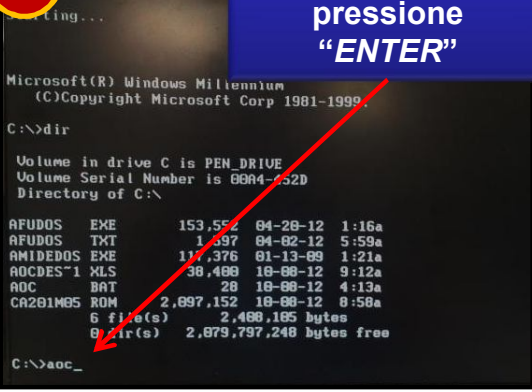
Digite: "DIR" e pressione "ENTER"



```
Starting...
Microsoft(R) Windows Millennium
(C)Copyright Microsoft Corp 1981-1999.
C:\>dir_
```

**3**

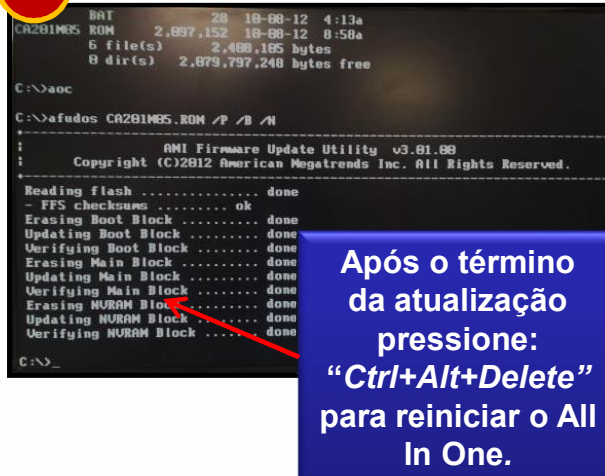
Digite: "AOC" e pressione "ENTER"



```
Starting...
Microsoft(R) Windows Millennium
(C)Copyright Microsoft Corp 1981-1999.
C:\>dir
Volume in drive C is PEN_DRIVE
Volume Serial Number is 00A4-052D
Directory of C:\
AFUDOS EXE 153,552 04-20-12 1:16a
AFUDOS TXT 1,397 04-02-12 5:59a
AMIDEDDS EXE 117,376 01-10-09 1:21a
AOCDES*1 XLS 30,488 10-08-12 9:12a
AOC BAT 28 10-08-12 4:13a
CA201M05 ROM 2,097,152 10-08-12 8:50a
6 file(s) 2,488,185 bytes
8 dir(s) 2,079,797,240 bytes free
C:\>aoc_
```

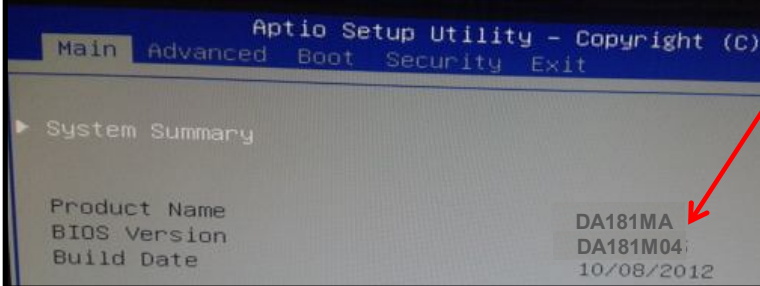
**4**

Após o término da atualização pressione: "Ctrl+Alt+Delete" para reiniciar o All In One.



```
CA201M05 ROM 2,097,152 10-08-12 8:50a
6 file(s) 2,488,185 bytes
8 dir(s) 2,079,797,240 bytes free
C:\>aoc
C:\>aofudos CA201M05.ROM /P /B /A
:
: AMI Firmware Update Utility v3.01.00
: Copyright (C)2012 American Megatrends Inc. All Rights Reserved.
:
Reading flash ..... done
- FFS checksums ..... ok
Erasing Boot Block ..... done
Updating Boot Block ..... done
Verifying Boot Block ..... done
Erasing Main Block ..... done
Updating Main Block ..... done
Verifying Main Block ..... done
Erasing NVRAM Block ..... done
Updating NVRAM Block ..... done
Verifying NVRAM Block ..... done
C:\>_
```

Remova o Pen drive, acesse o setup da BIOS e verifique a versão:



```
Aptio Setup Utility - Copyright (C)
Main Advanced Boot Security Exit
System Summary
Product Name DA181MA
BIOS Version DA181M04
Build Date 10/08/2012
```

**MODELO:DA181MA**  
**BIOS:DA181M04**  
**DATA: 10/08/2012**